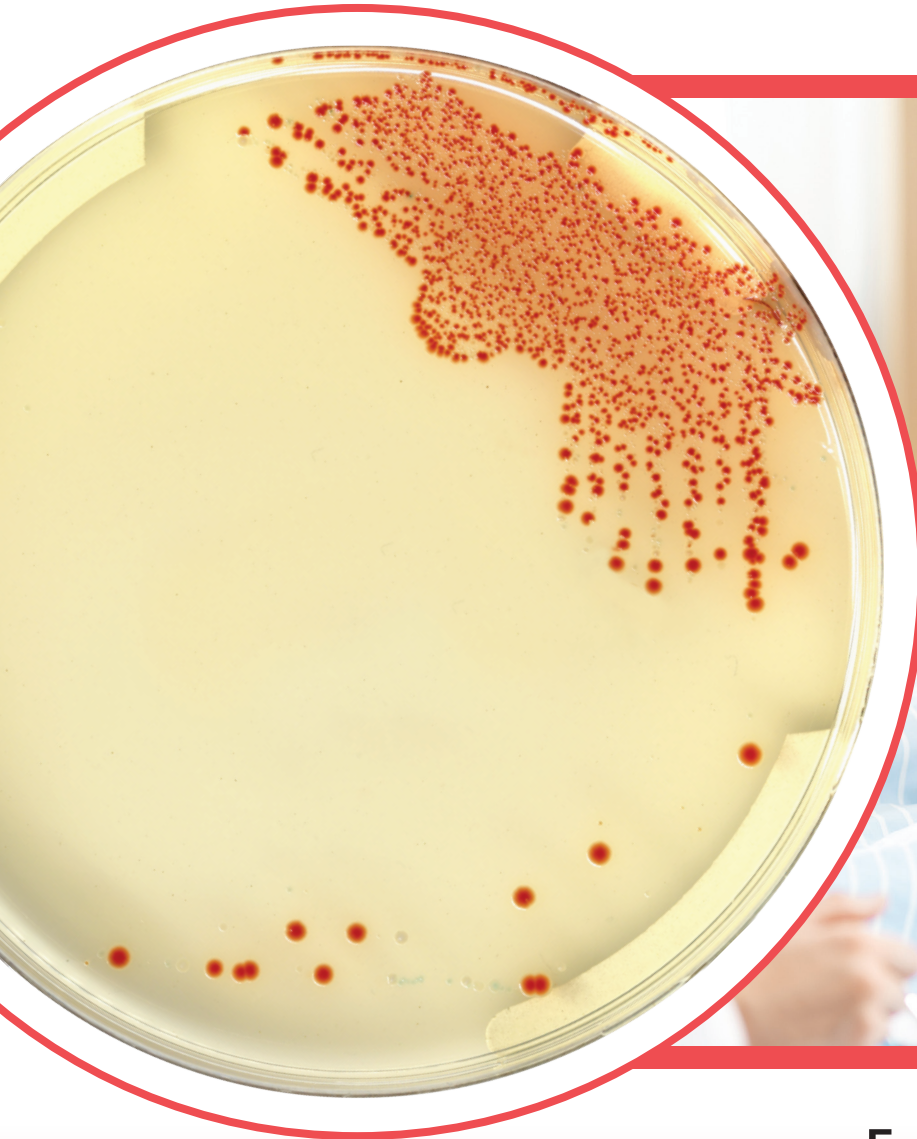


COLOREX™

COLOREX™ StrepA



For screening and detection of
Group A Streptococci in throat swabs



Microbiology in Color

COLOREX™ StrepA

For screening of Group A Streptococci in throat samples

BACKGROUND

According to the Centers for Disease Control (CDC), Group A Streptococcus (group A strep) can give rise to a spectrum of infections, ranging from minor ailments to severe and life-threatening conditions such as strep throat, scarlet fever, rheumatic fever, and streptococcal shock syndrome. While most sore throats are caused by viruses, strep throat infections, particularly affecting children between 5 and 15 years of age, are attributed to the contagious Group A Streptococcus bacterium. In fact, "GAS causes infections such as strep throat and impetigo. These bacteria also cause approximately 11,000–13,000 cases of severe (invasive) GAS disease, such as necrotizing fasciitis, in the United States each year," per the CDC website.

Streptococcus pyogenes infection is responsible for nearly all Streptococci caused bacterial pharyngitis, therefore the specific target of current strep throat screening methods.

Rapid and accurate detection of this microorganism in throat specimens, particularly in children and elderly patients, is essential to start antibiotic therapy to prevent complications and reduce the risk of transmission to other persons.

Patients are commonly tested for the presence of GAS using antigen detection tests that provide results in 15-20 minutes, but with a positive predictive value of ~70-90% and a rate of false negatives ~10-20%. However, throat culture is used primarily as a confirmatory test with definitive results requiring 24 h.

COLOREX™ StrepA is a new chromogenic formulation allowing for an easy to read and straightforward color differentiation of GAS colonies (in orange to red), among the other bacteria, in the complex throat flora (colorless or blue colonies).

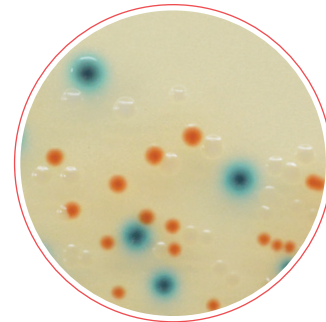
MEDIUM PERFORMANCE

- **EASY INTERPRETATION:** Easier reading thanks to an intense orange to red colony coloration.
- **HIGH SENSITIVITY:** Detection of GAS strains with a sensitivity close to 100%.
- **HIGH SPECIFICITY:** Differentiation of GAS in orange colonies from the other oral Streptococci which grow in blue or colorless colonies.
- **IDEAL FOR USE WITH FULL MICROBIOLOGY LABORATORY AUTOMATION:** Exceptional sensitivity and specificity of COLOREX™ Strep A medium has been demonstrated when pairing the vibrant color of the GAS colonies on COLOREX™ StrepA and advanced A.I plate image analysis systems.

POWDER MEDIUM DESCRIPTION

Powder Base	Total.....	54.3 g/L
	Agar	15.0
	Peptones and yeast extract	27.0
	Salts	9.0
	Growth factors.....	3.0
	Chromogenic and selectiv mix	0.3
Storage at 15/30 °C - pH: 7.2 +/- 0.2		
Shelf Life..... 2 years		
+ 2 Supplements (included in the pack)	1st: Liquid form 2ml/L	2nd: Powder..... 0.1 g/L
	Storage at 15/30 °C	Storage at 2/8°C
Shelf Life3 years		Shelf Life.....2 years
Usual Samples	Throat swabs	
Procedure	Direct Streaking. Incubation 18-24 h at 37 °C. CO ₂ .	

PLATE READING



Group A Streptococcus
orange to red

Other oral Streptococci
colourless or blue

COLOREX™

Plates Made with the Original CHROMagar™ Powder

CHROMAGAR, Paris - France

www.COLOREX-Media.com

COLOREX™ and CHROMagar™ are trademarks of Dr. A Rambach